

146°W

145°W

144°W

143°W

142°W



ANWR Map - Plate 1
Map prepared at the request of the Senate Energy and
Natural Resources Committee 10/24/2017



70°N

70°N

69°30'N

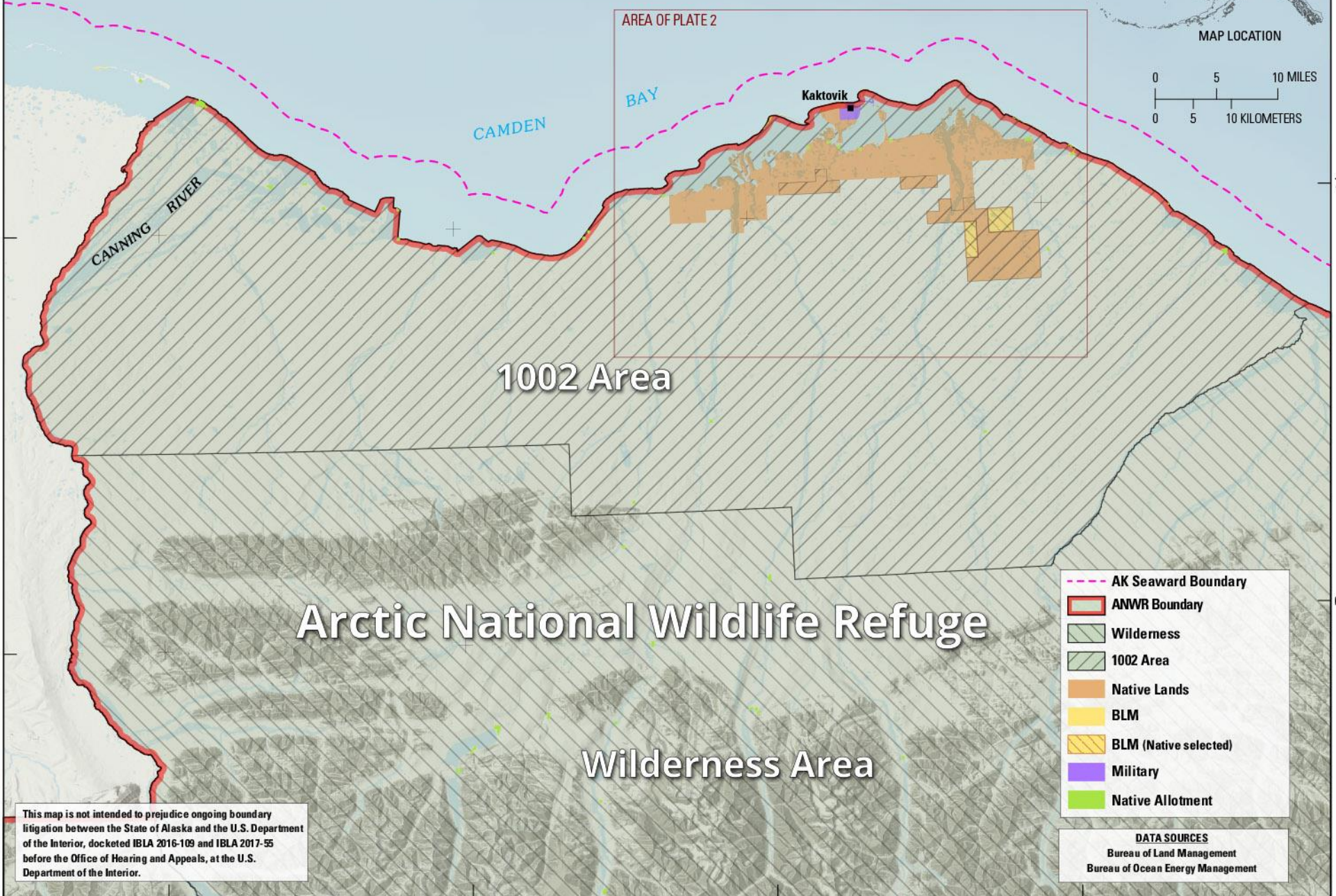
69°30'N

146°W

145°W

144°W

143°W



Arctic National Wildlife Refuge

Wilderness Area

1002 Area

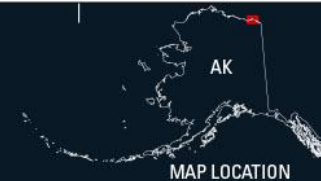
AREA OF PLATE 2

- AK Seaward Boundary
- ANWR Boundary
- Wilderness
- 1002 Area
- Native Lands
- BLM
- BLM (Native selected)
- Military
- Native Allotment

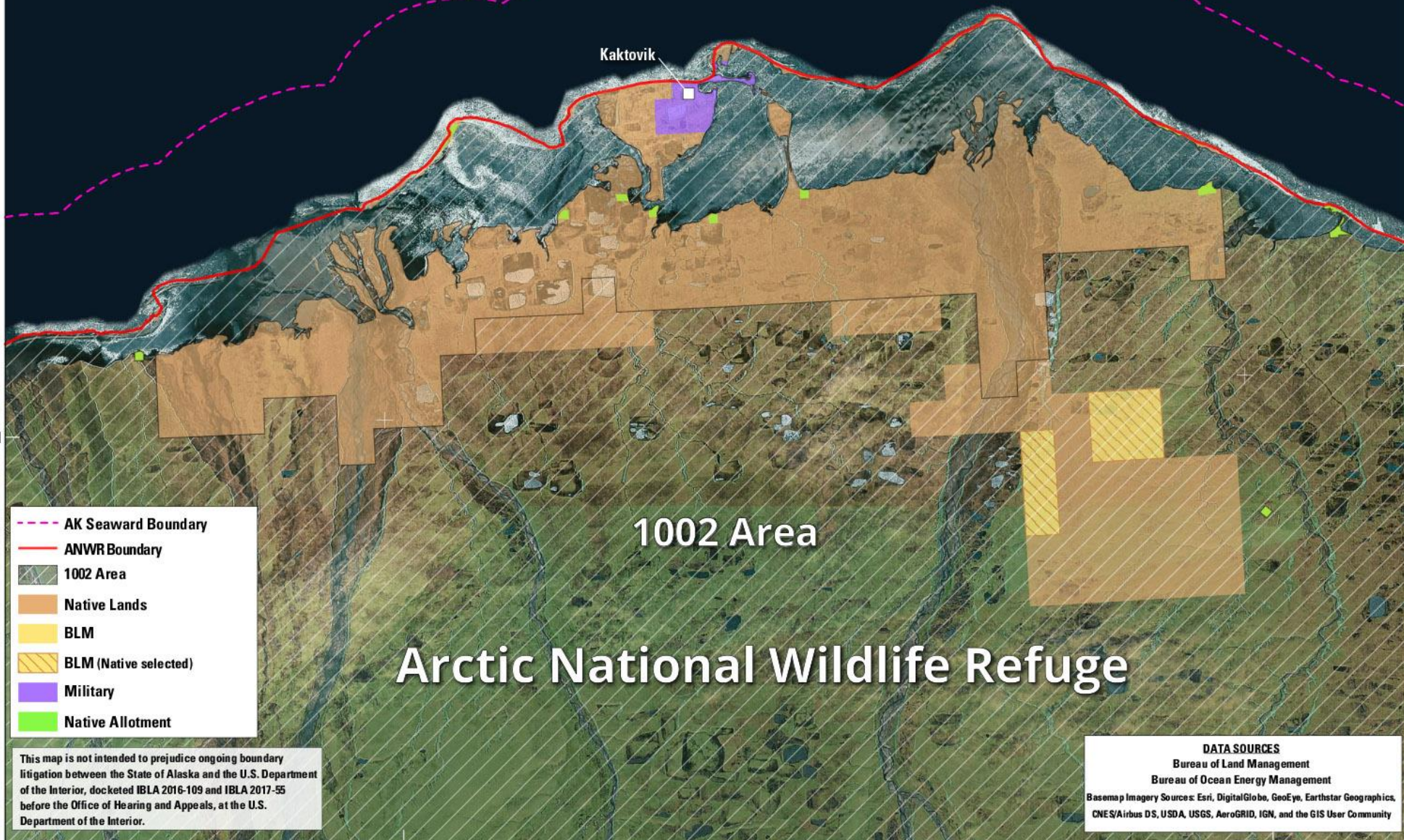
DATA SOURCES
Bureau of Land Management
Bureau of Ocean Energy Management

This map is not intended to prejudice ongoing boundary litigation between the State of Alaska and the U.S. Department of the Interior, docketed IBLA 2016-109 and IBLA 2017-55 before the Office of Hearing and Appeals, at the U.S. Department of the Interior.

ANWR Map - Plate 2
Map prepared at the request of the Senate Energy and
Natural Resources Committee 10/24/2017



MAP LOCATION



Kaktovik

1002 Area

Arctic National Wildlife Refuge

- AK Seaward Boundary
- ANWR Boundary
- ▨ 1002 Area
- Native Lands
- BLM
- ▨ BLM (Native selected)
- Military
- Native Allotment

This map is not intended to prejudice ongoing boundary litigation between the State of Alaska and the U.S. Department of the Interior, docketed IBLA 2016-109 and IBLA 2017-55 before the Office of Hearing and Appeals, at the U.S. Department of the Interior.

DATA SOURCES
Bureau of Land Management
Bureau of Ocean Energy Management
Basemap Imagery Source: Esri, DigitalGlobe, GeoEye, Earthstar Geographics, CNES/Airbus DS, USDA, USGS, AeroGRID, IGN, and the GIS User Community