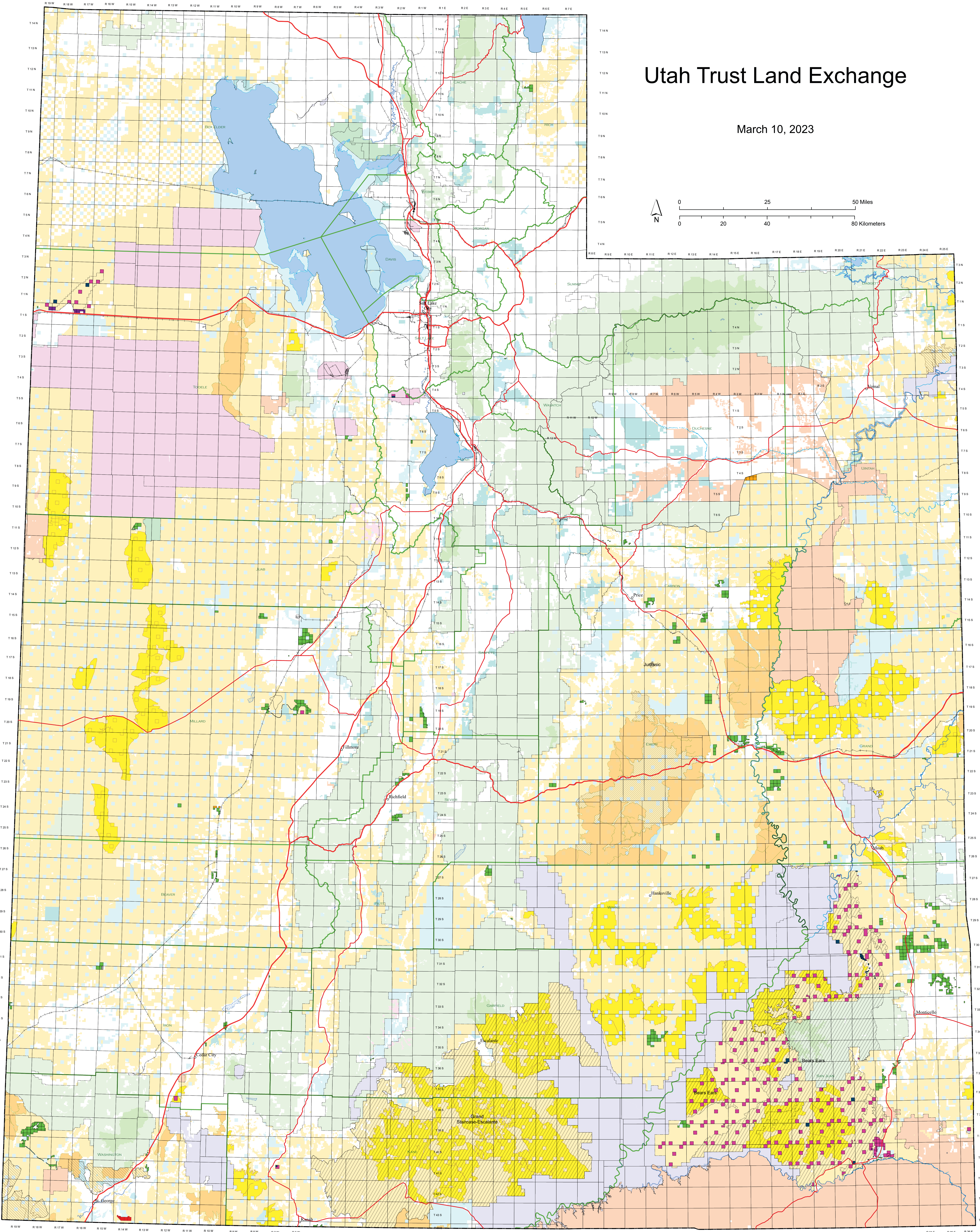
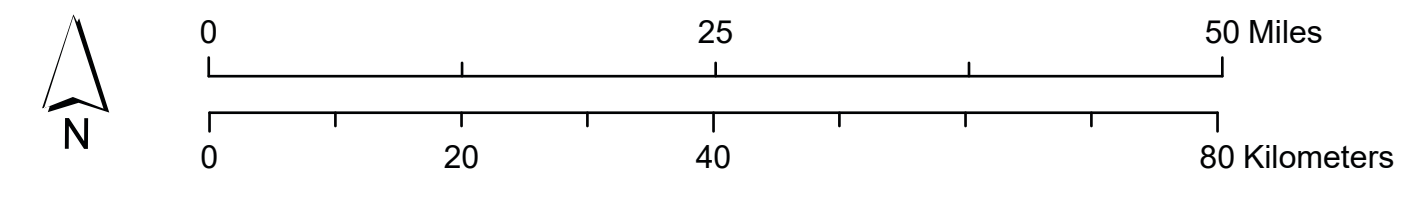


Utah Trust Land Exchange

March 10, 2023



Proposed Exchange Parcels	Land Ownership	Special Designations
Federal Lands Proposed to Transfer to State	Bureau of Land Management (BLM)	Wilderness Study Area
Federal Mineral Lands Proposed to Transfer to State	BLM Wilderness	San Rafael Swell Recreation Area
Federal Right-of-Way Proposed to Transfer to State	Bankhead-Jones Land Use Lands	National Conservation Area
Federal Surface Lands Proposed to Transfer to State	Bureau of Reclamation	National Monument
Federal Lands Proposed for Equalization	Indian Reservation (IR)	
State Trust Lands Proposed to Transfer to United States	Military Reservations and Corps of Engineers	Interstate
State Trust Mineral Lands Proposed to Transfer to United States	National Park Service (NPS)	US Highway
State Trust Surface Lands Proposed to Transfer to United States	Private	State Highway
	State Parks and Recreation	State Boundary
	State Wildlife Reserve/Management Area	County Boundary
	US Fish & Wildlife (USFW) National Wildlife Refuge	Administrative Boundary
	US Forest Service (USFS)	
	USFS Wilderness Area	

No warranty is made by the Bureau of Land Management as to the accuracy, reliability, or completeness of these data for individual use or aggregate use with other data. Original data were compiled from various sources. This information may not meet National Map Accuracy Standards. This product was developed through digital means and may be updated without notification.

